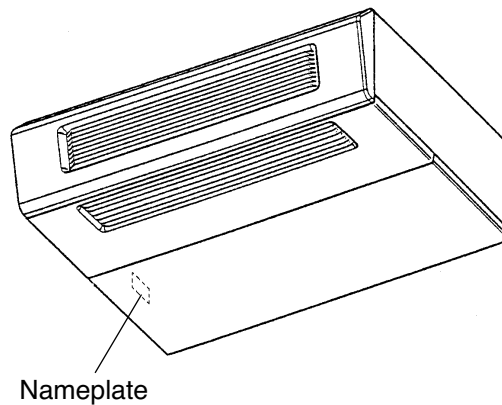


LOSSNAY

PARTS CATALOG

FOR DEALERS

Model: LGH-40ES-E



PZ-03SLP-E

Repair work should be performed by the manufacturer, its service agent or similarly qualified person in order to avoid hazards.

Contents

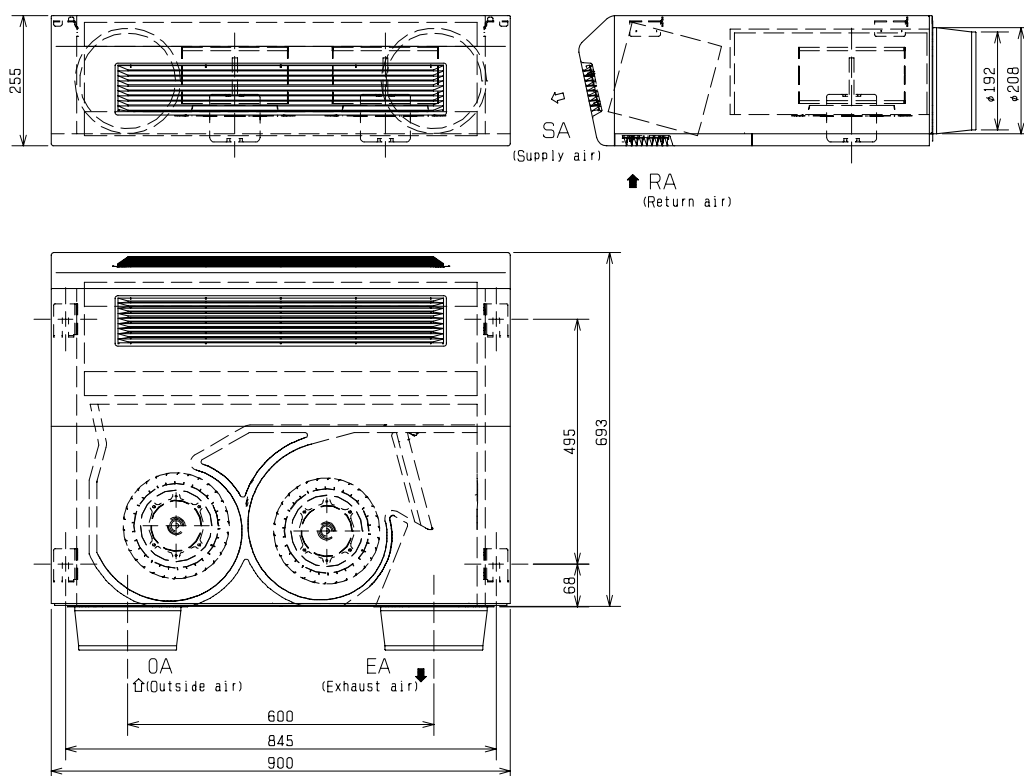
- 1. Specifications 3
- 2. Dimensions 3-4
- 3. Wiring diagrams 5
- 4. Parts catalog 6-11
 - LGH-40ES-E..... 7-10
 - PZ-03SLP-E..... 11

1. Specifications

Model	LGH-40ES-E	
Heat exchange system	Air-to-air total heat (sensible heat + latent heat)exchange	
Heat exchanger material	Partition, spacing plate-special treated paper	
Cladding	Galvanized steel sheet	
Heat insulating material	Self-extinguishing urethane foam	
Motor	Totally enclosed capacitor permanent split-phase induction motor, 4 poles, 2 units	
Blower	200mm dia. centrifugal fan	
Filter material	Non-woven fabrics filter (Gravitational method 82%)	
Installing environment (Supply air)	-10℃ to +40℃, RH 80% or less	
Functions	Lossnay ventilation High-Low switching	
Weight	(25)Kg	
Power supply	220V-240V~ 50Hz	
Fan speed	High	Low
Current (A)	0.61-0.62	0.38-0.40
Power consumption (W)	132-146	82-95
Air volume (m³/h)	400	250
External static pressure (Pa)	20	8
Temperature recovery efficiency (%)	60	66
Enthalpy recovery efficiency	Heating	54
	Cooling	48
Noise (dB)	41-43	32-34
Starting current		
Insulation resistance	10MΩ or more (500V megger)	
Dielectric strength	AC 1500V 1 minute	

2. Dimensions

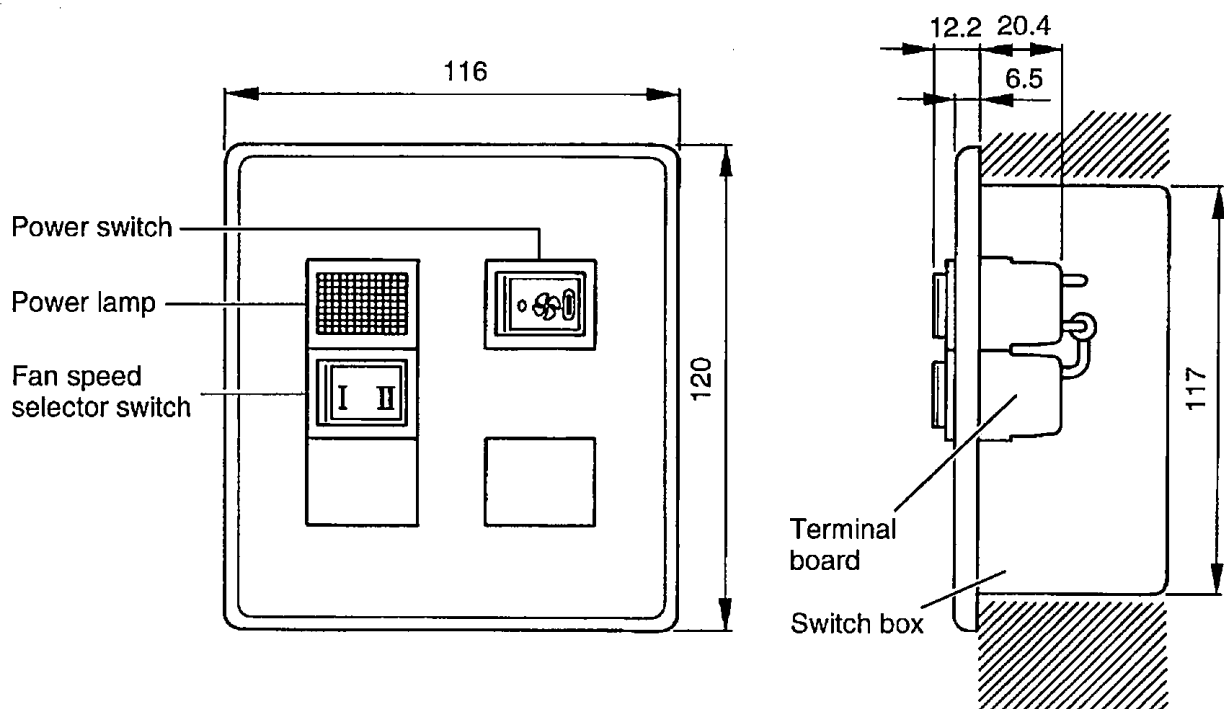
LGH-40ES-E



※ Attention

1. The two outdoor ducts must be covered with heat-insulating material in order to prevent condensation from forming.
2. The installation of the outside ducts must be prevented from the entry of rain water, from Lossnay unit.

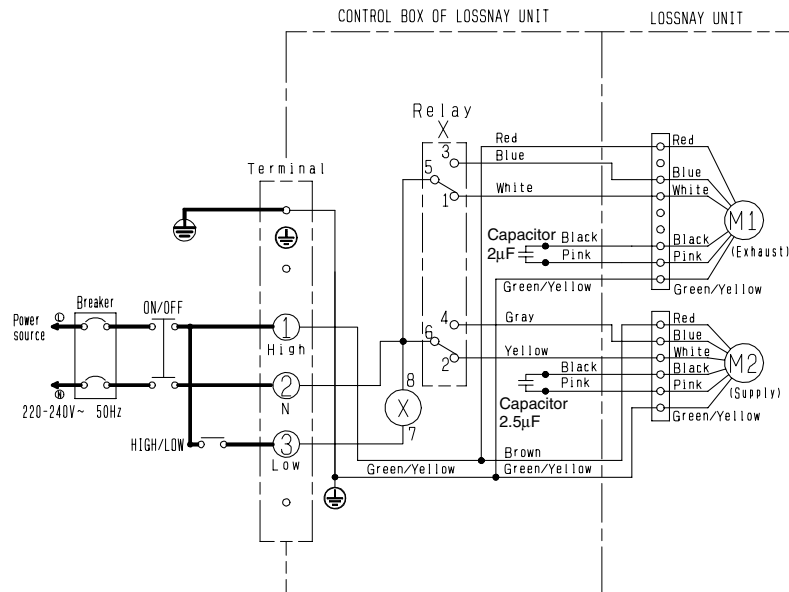
Unit (mm)



Unit (mm)

3. Wiring diagrams

LGH-40ES-E

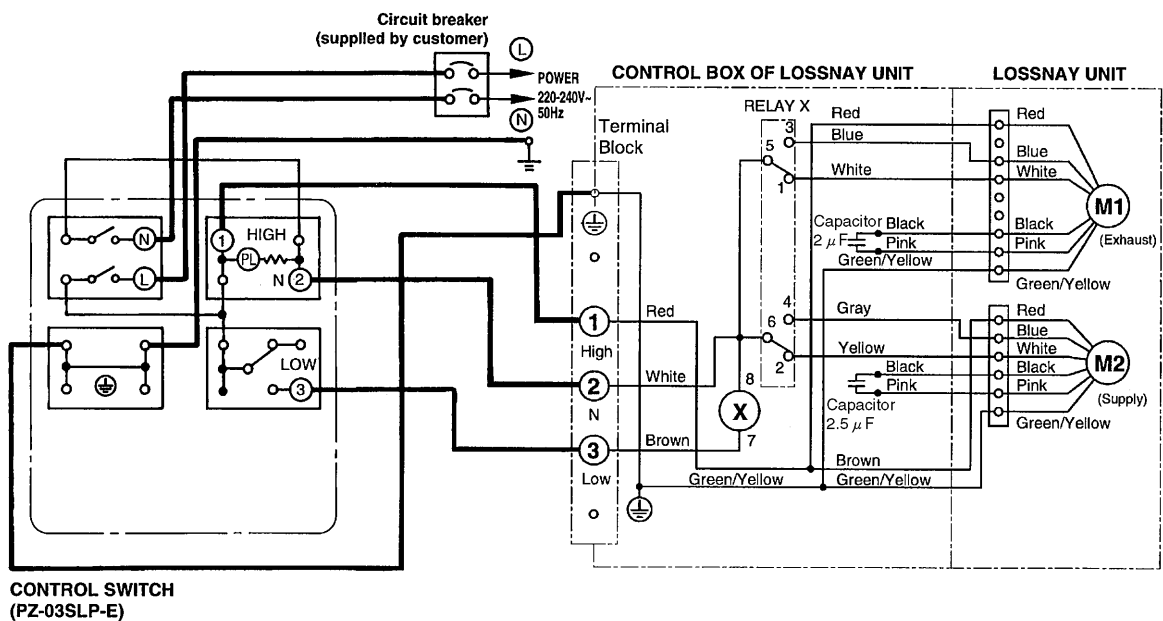


※ Attention

1. Connect the wires indicated by the bold lines.
2. Be sure to connect the grounding wire.
3. Breakers and control switches should be provided by the customer.

For connection of a control switch (PZ-03SLP-E)

(Connect the parts indicated by the bold lines.)

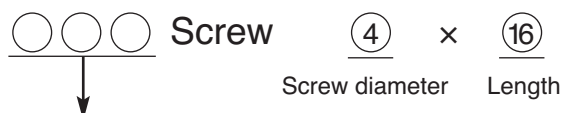


4. Parts catalog

Please note the following when using the parts catalog.

1. When ordering parts, always indicate the part number, part name, and the number of parts required.
2. Parts are not always available, and it may take time for you to receive them.
3. There may be specification improvements or price changes.
4. Specifications and prices are correct as of July 2008.
5. Parts marked \triangle are critical for safety. To maintain safety and performance, always replace these parts with the parts prescribed.
6. The numbers that are circled in the exploded view are the same as the number for the part being indicated.

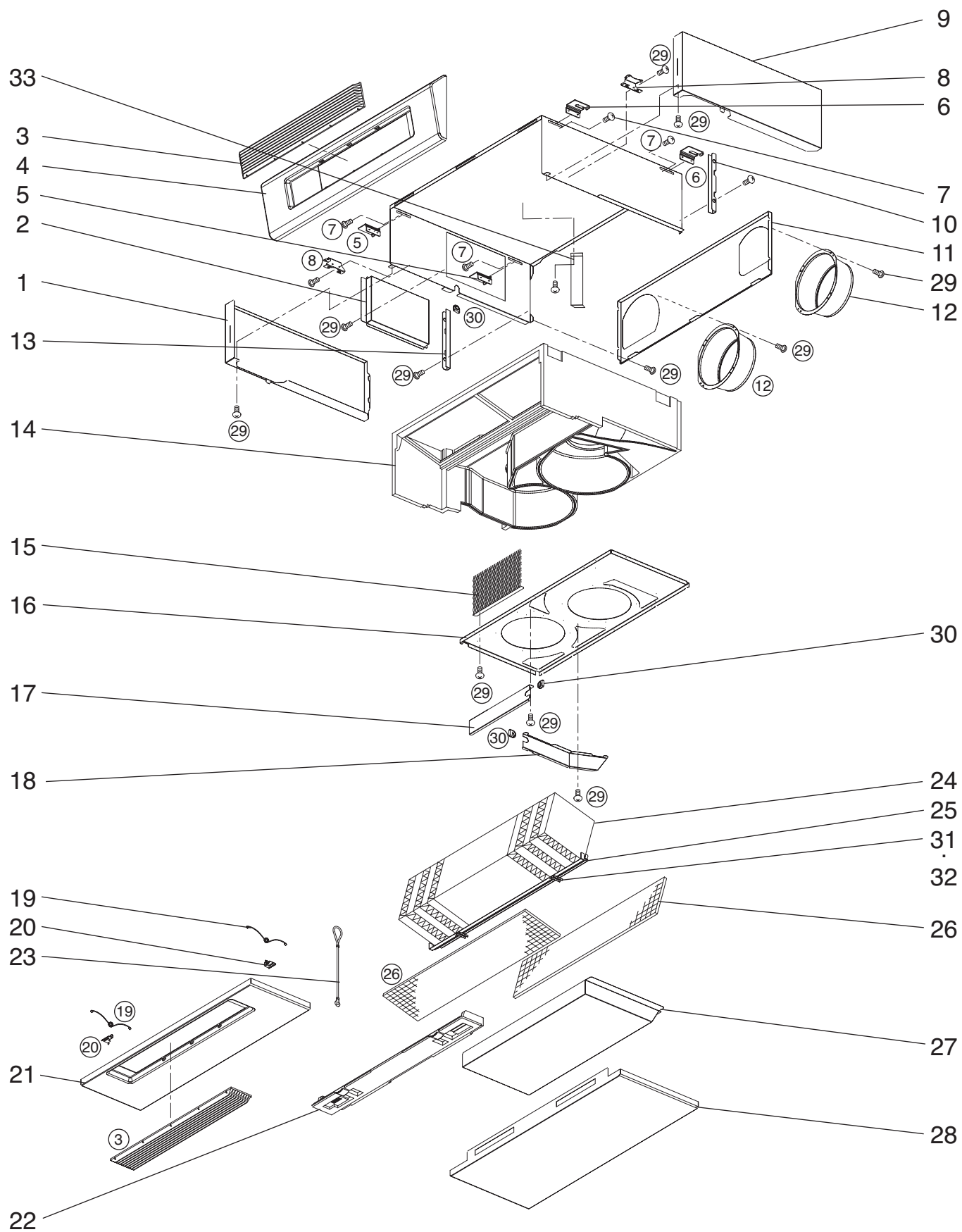
Description of screw abbreviations



Abbreviation	Description
PC screw	Cross recess flat head machine screw
PRC screw	Cross recess oval head machine screw
PP screw	Cross recess pan head machine screw
SW · PP screw	Cross recess pan head screw with spring washer
PPT screw	Cross recess tapping screw
PCT screw	Cross recess flat head tapping screw
PTT screw	Cross recess truss head tapping screw
PT screw	Cross recess truss head machine screw
SET screw	Slotted head stop screw
SQ · SET screw	Square head stop screw
P · SET screw	Pan head stop screw
PMT screw	Primer truss head screw
HS · SET screw	Hexagon head stop screw
P · R · W screw	Cross recess round wood screw
P · C · W screw	Cross recess flat head wood screw
P · R · C · W screw	Cross recess round and flat wood screw
R · W screw	Slotted round wood screw
PW · PP screw	Cross recess pan head screw with small washer
SW-PW · PP screw	Cross recess pan head machine screw with spring washer and flat washer

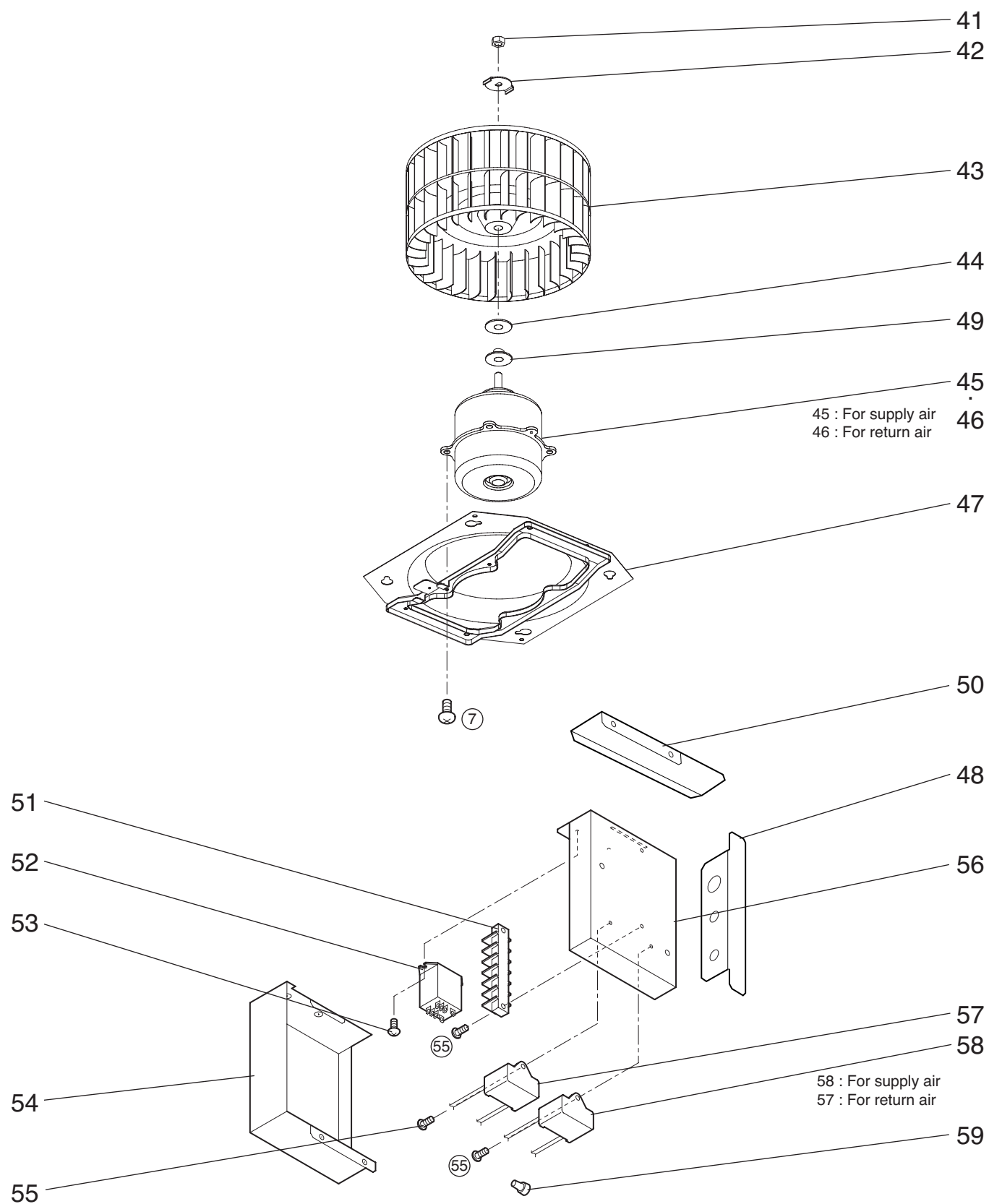
Model LGH-40ES-E

No.	Parts No.	Name of part	Q'ty pcs/unit	Critical for safety	Remarks	Price
1.	R50 424 732	Side cover(L)	1			
2.	Y50 096 708	Base	1			
3.	R50 424 717	Grille	2			
4.	R50 424 713	Casing(front)	1			
5.	R50 091 380	Hanger(L)	2			
6.	R50 424 380	Hanger(R)	2			
7.	H00 000 390	PT screw 5×10	20			
8.	R50 424 382	Grille fix plate	2			
9.	R50 424 733	Side cover(R)	1			
10.	R50 424 708	Fix piece(R)	1			
11.	R50 424 716	Casing(back)	1			
12.	R50 028 610	Flange	2			
13.	R50 424 707	Fix piece(L)	1			
14.	R50 424 486	Fan casing	1			
15.	R50 424 726	Guard net	1			
16.	R50 424 656	Fan base	1			
17.	R50 424 722	Lead cover	1			
18.	R50 424 721	Separate plate	1			
19.	M35 083 156	Spring	2			
20.	R50 424 381	Spring fix plate	2			
21.	R50 424 734	Maintenance panel	1			
22.	R50 424 728	Maintenance cover	1			
23.	R50 394 343	Wire	2		145mm	
24.	R50 424 725	Lossnay core	1	▲		
25.	R50 424 724	Core holder	1			
26.	R50 424 727	Filter	2	▲		
27.	R50 424 720	Fan cover	1			
28.	R50 424 735	Front panel	1			
29.	H00 000 487	PTT screw 4×8	82			
30.	M45 649 226	Cord bush	3			
31.	R50 424 723	Fix piece	2			
32.	M31 234 089	Special bush	2			
33.	Y50 096 707	Fix plate	1			



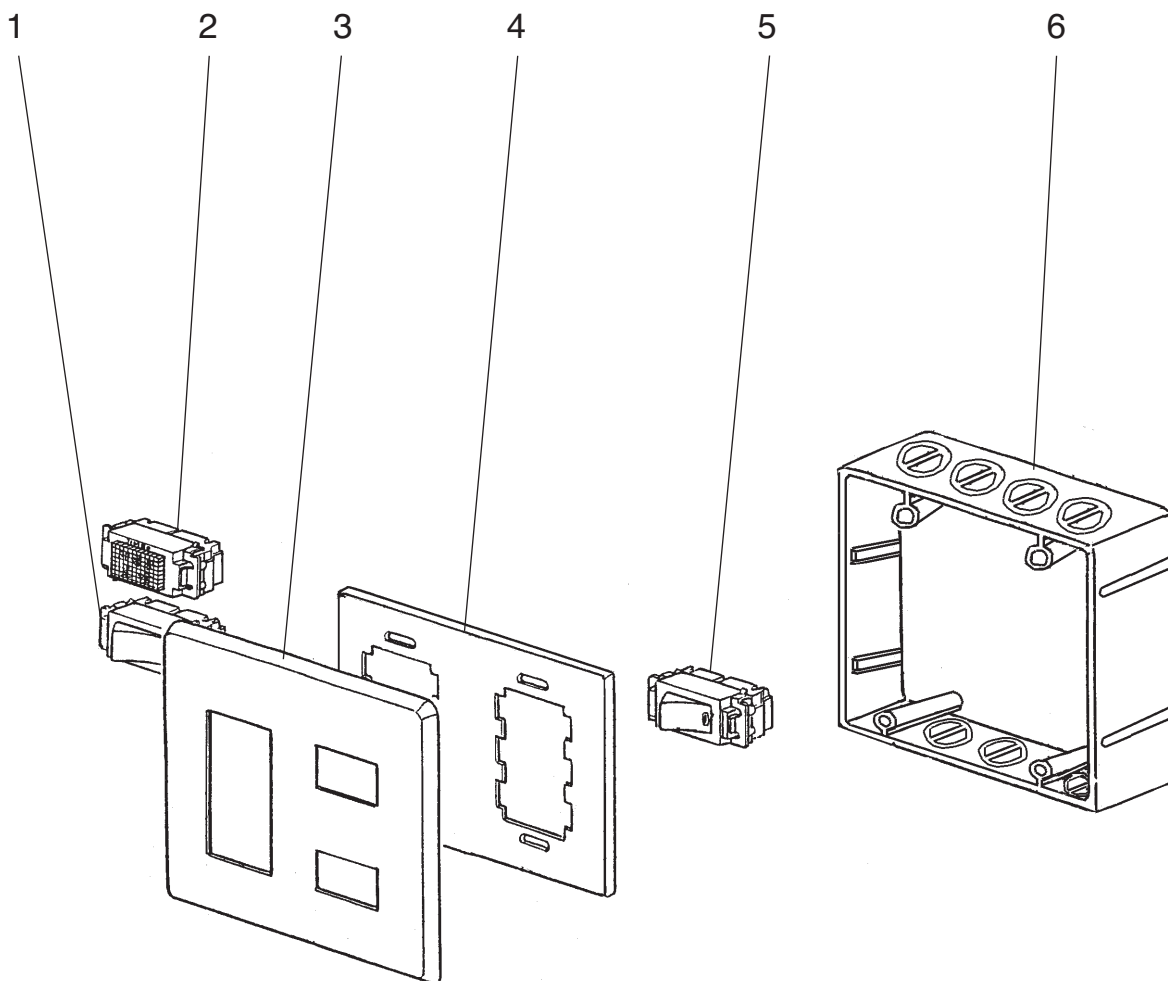
Model LGH-40ES-E

No.	Parts No.	Name of part	Q'ty pcs/unit	Critical for safety	Remarks	Price
41.	X31 267 067	Special nut(8)	2			
42.	R50 424 077	Tab washer	2			
43.	R50 216 480	Centrifugal fan	2	▲	φ 200	
44.	M34 706 465	Special washer	2		φ 10	
45.	Y50 096 453	Motor(SA)	1	▲		
46.	Y50 096 454	Motor(RA)	1	▲		
47.	R50 351 713	Motor fix plate	2			
48.	Y50 096 711	Fix plate	1			
49.	Y50 031 608	Flinger	1			
50.	Y50 096 712	Cover	1			
51.	R50 069 236	Terminal block	1	▲	6P	
52.	Y50 009 268	Relay	1	▲		
53.	H00 000 384	PPT screw 3×6	2			
54.	Y50 096 710	Control cover	1			
55.	H00 000 488	PTT screw 4×12	4			
56.	Y50 096 709	Control base	1			
57.	X50 010 284	Capacitor	1	▲	2.0 μ F 440VAC	
58.	R50 385 283	Capacitor	1	▲	2.5 μ F 440VAC	
59.	K83 382 240	Terminal	5	▲	CE2	



Model PZ-03SLP-E

No.	Parts No.	Name of part	Q'ty pcs/unit	Critical for safety	Remarks	Price
1.	M34 856 260	Switch	1	▲		
2.	Y50 025 269	Pilot lamp	1	▲	Orange	
3.	Y50 097 364	Switch panel	1			
4.	Y50 097 250	Switch fix plate	1			
5.	Y50 025 260	Switch	1	▲	JES-BN-2M	
6.	Y50 097 251	Switch box	1			



Revision record

U072

Revision	Date	Overview
A	2008-07-18	<p>Parts Nos. were changed due to the changeover to DecaBDE-free parts.</p> <p>Page 9 Parts No. of No.45 was Y50 096 451. Parts No. of No.46 was Y50 096 452. Parts No. of No.49 was K83 170 608.</p> <p>Other revisions</p> <p>Page 7 Quantity (Q'ty pcs/unit) of No.7 was 8. (Error) Parts No. of No.30 was M45 640 228 and quantity was 2. (Error)</p> <p>Page 9 No.48 (Parts No. H00 000 390)was deleted. (Duplication of No.7) Parts No. of No.57 was X50 010 283. Parts No. of No.59 was H00 185 240 and quantity was 4.</p> <p>Page 10 No.⑦was No.48. (Duplication of No.7)</p>