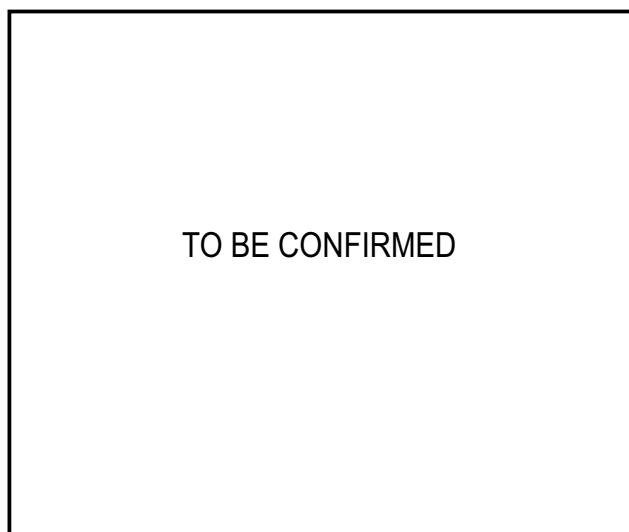


Photo



Descriptions

Enables outdoor installation of branch box in case its installation is impossible.

Applicable Models

- MXZ-8A140VA
- PAC-AK30BC
- PAC-AK50BC

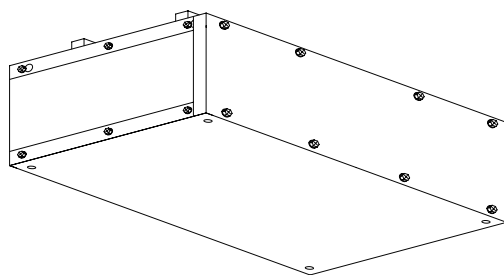
Specifications

TO BE CONFIRMED

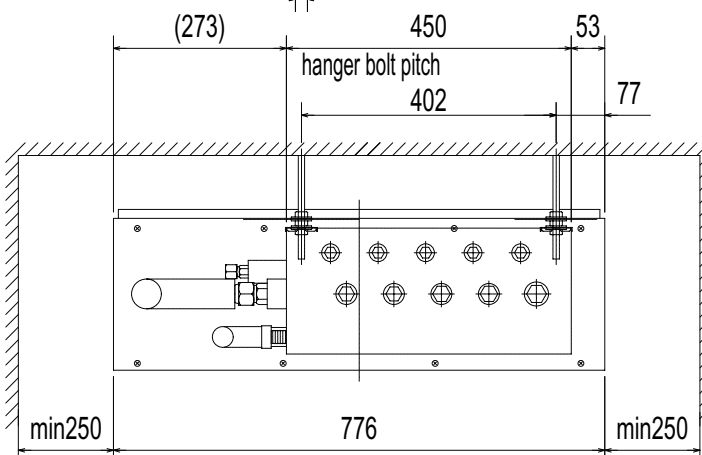
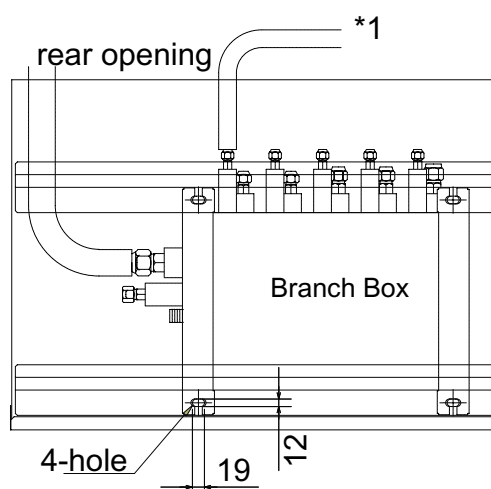
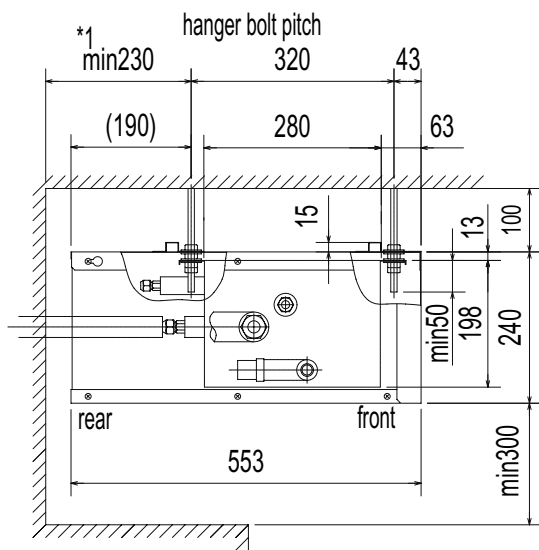
Dimensions

Unit : mm

completed view

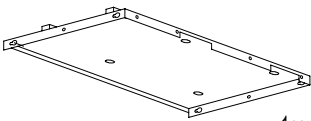
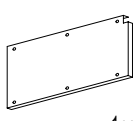
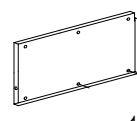
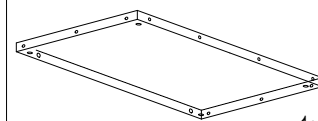
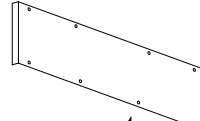
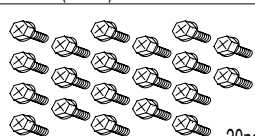

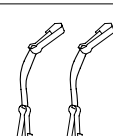



*1 Minimum dimension 330mm is required when distribution pipe is bent 90°



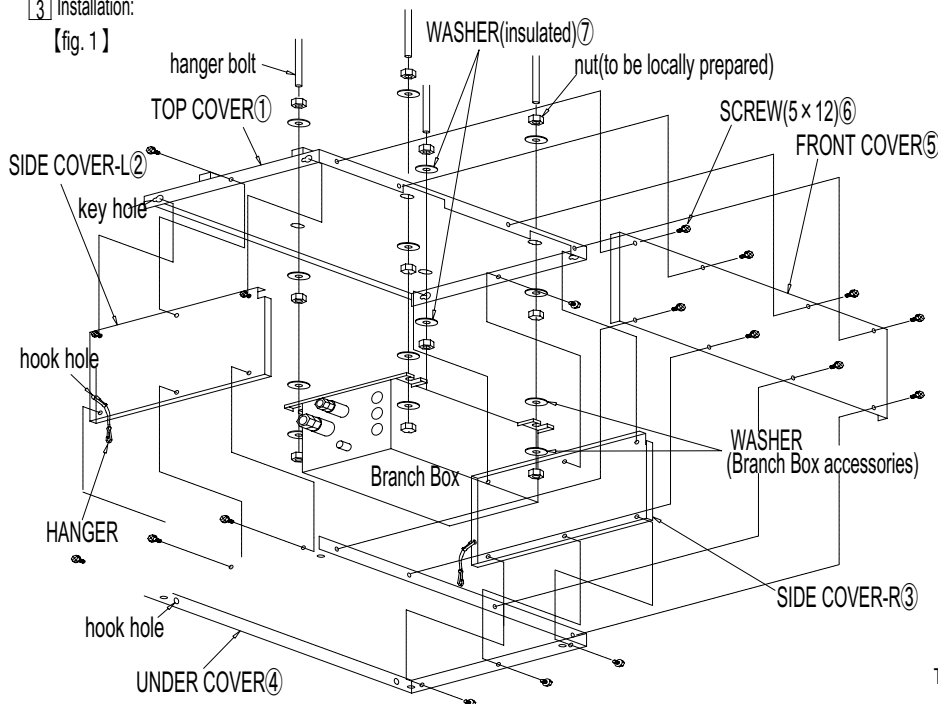
How to Use / How to Install

1 Please check if you have all the following parts in the packing before installation:

① TOP COVER  1pc	② SIDE COVER-L  1pc	③ SIDE COVER-R  1pc	④ UNDER COVER  1pc	⑤ FRONT COVER  1pc
⑥ SCREW(5 × 12)  20pcs	⑦ WASHER(insulated)  8pcs	⑧ HANGER  2pcs	⑨ INSTALLATION PROCEDURE  This sheet 1 sheet	

3 Installation:

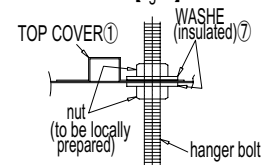
【fig. 1】



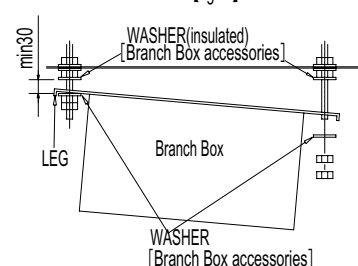
《Installation Procedures》

1. Install hanger bolts to match with the holes on the Branch Box (and the outer cover).
2. Put a nut (to be locally purchased) and a WASHER (7) to the each hanger bolts.
3. Fix the TOP COVER (1) to the hanger bolts with WASHERS (7) and nuts. 【fig. 2】
Make sure to level the TOP COVER (1) before fixing.
4. Put one insulated WASHER each (which come with the Branch Box) to 4 hanger bolts. 【fig. 3】
5. Put one WASHER and one nut each (which come with the Branch Box) to 2 hanger bolts either at front side or back side. 【fig. 3】
6. Hook two LEGs on the pre-fixed WASHERs and nuts first.
Then insert hanger bolts to two LEGs on the opposite side and fix them with WASHERs and nuts (which come with the Branch Box). 【fig. 4】
Make sure to level the Branch Box before fixing it.
※ Make sure that all 16 nuts are tightly fixed.
7. Install pipings and wirings etc, following the installation manual of the Branch Box.
※ Piping must be installed within the Outer Cover.
8. Fix the SIDE COVERS (2 & 3) on both sides to the TOP COVER (1) with SCREWS (6).
First, put SCREWS (6) tentatively to the holes at the both upper ends of the SIDE COVERS (2 & 3), then hook them to the key holes on the TOP COVER (1).
9. Fix the UNDER COVER (4) to the SIDE COVERS (2 & 3) with SCREWS (6).
Hook HANGERS (8) first to the rear holes on the SIDE COVERS (2 & 3) and then hook the other end of the HANGERS to the rear hole on the UNDER COVER (4). Thus you can avoid the UNDER COVER (4) falling and the installation work will be easier (facilitated).
10. Fix the FRONT COVER (5) to the TOP COVER (1) and the UNDER COVER (4) with SCREWS (6).
※ Make sure that all 20 SCREWS are tightly fixed.

【fig. 2】



【fig. 3】



【fig. 4】

