

Revision A:

- MLZ-KA25/35/50VA-**E2** have been added.

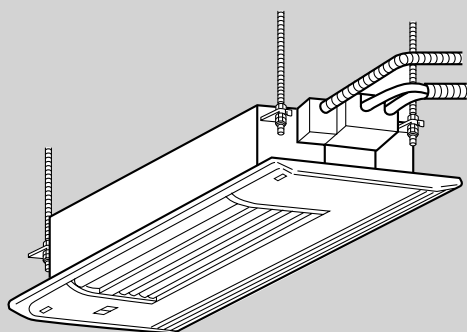
Please void OBH483.

INDOOR UNIT PARTS CATALOG

No. OBB483
REVISED EDITION-A

Models

MLZ-KA25VA	- E1
MLZ-KA25VA	- E2
MLZ-KA35VA	- E1
MLZ-KA35VA	- E2
MLZ-KA50VA	- E1
MLZ-KA50VA	- E2



MLZ-KA25VA
MLZ-KA35VA
MLZ-KA50VA



CONTENTS

1. RoHS PARTS LIST.....	2
2. OPTIONAL PARTS.....	4

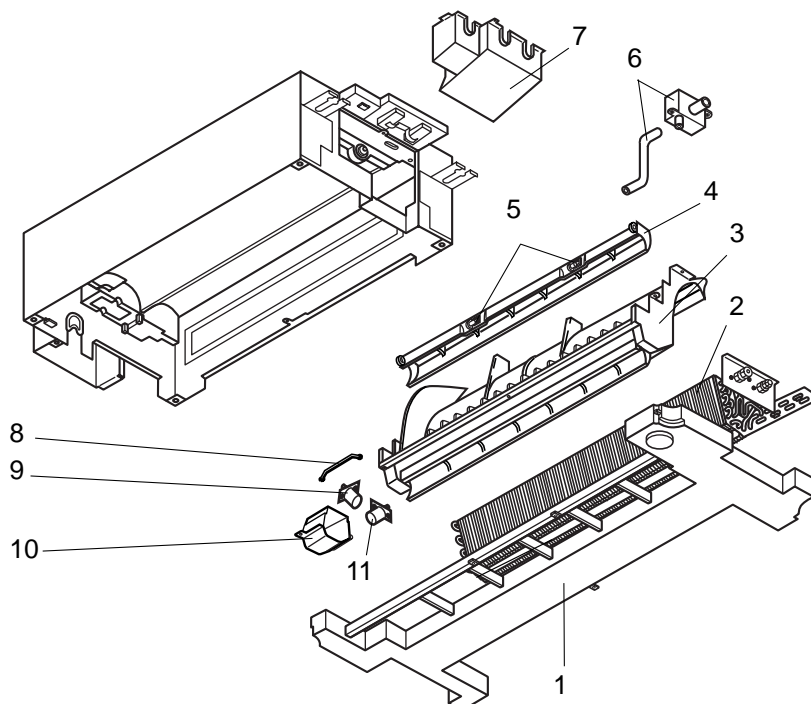
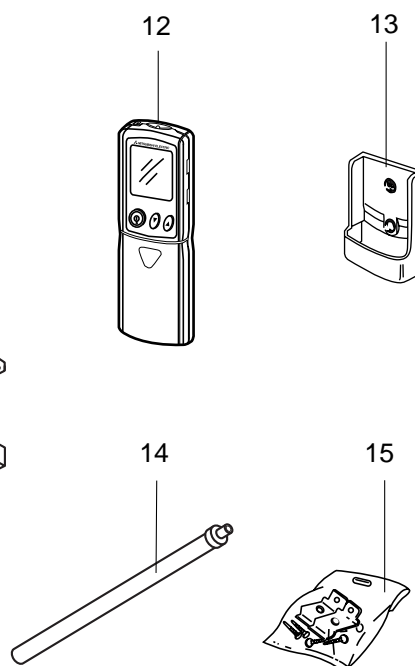
SERVICE MANUAL (OBH483)

NOTE:

- RoHS compliant products have <G> mark on the spec name plate.

Revision A :

- MLZ-KA25/35/50VA-**E2** have been added.

1**RoHS PARTS LIST****MLZ-KA25VA****MLZ-KA35VA****MLZ-KA50VA****1-1. INDOOR UNIT STRUCTURAL PARTS****1-2. ACCESSORY AND REMOTE CONTROLLER****1-1. INDOOR UNIT STRUCTURAL PARTS**

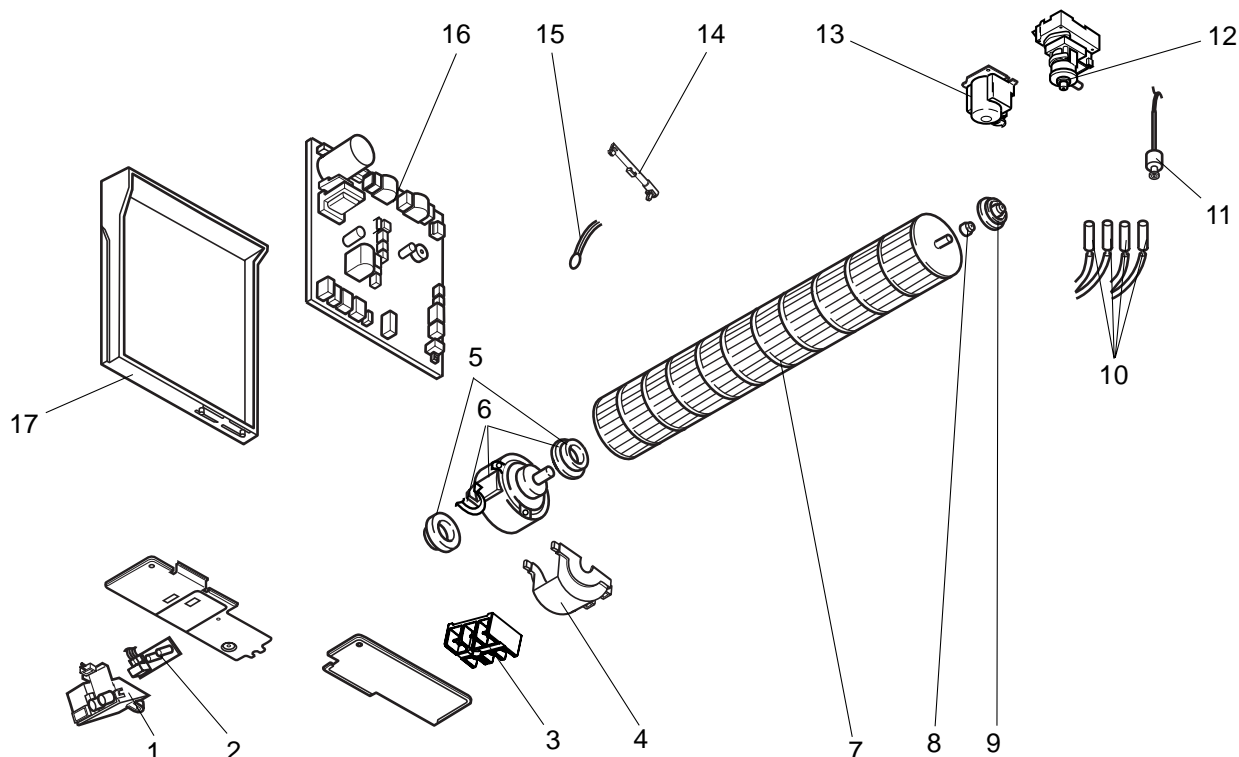
No.	ROHS	Part No.	Part name	Symbol in Wiring Diagram	Q'ty/unit						Remarks
					MLZ-KA						
					25VA -		35VA -		50VA -		
					E1	E2	E1	E2	E1	E2	
1	G	M21 L9V 700	DRAIN PAN		1	1	1	1	1	1	
2	G	T2W 0A8 620	INDOOR HEAT EXCHANGER		1	1	1	1			
	G	T2W 1A0 620	INDOOR HEAT EXCHANGER						1	1	
3	G	M21 L9V 279	STABILIZER ASSEMBLY		1	1	1	1	1	1	Including vertical vane
4	G	M21 L9V 040	HORIZONTAL VANE		1	1	1	1	1	1	
5	G	M21 L9V 049	VANE SHAFT		1	1	1	1	1	1	
6	G	M21 L9V 703	DRAIN PIPE		1	1	1	1	1	1	
7	G	M21 L9V 249	DRAIN COVER		1	1	1	1	1	1	
8	G	M21 L9V 915	LINK		1	1	1	1	1	1	CRANK SET
9	G	M21 L9V 306	VANE MOTOR (VERTICAL)	MV2	1	1	1	1	1	1	
10	G	M21 L9V 953	VANE MOTOR SUPPORT		1	1	1	1	1	1	
11	G	M21 L0W 306	VANE MOTOR (HORIZONTAL)	MV1	1	1	1	1	1	1	

1-2. ACCESSORY AND REMOTE CONTROLLER

12	G	T2W 0A8 426	REMOTE CONTROLLER		1	1	1	1	1	1	KM07E
13	G	M21 0A8 083	REMOTE CONTROLLER HOLDER		1	1	1	1	1	1	
14	G	M21 L9V 702	DRAIN HOSE		1	1	1	1	1	1	
15	G	M21 L9V 250	ACCESSORY ASSEMBLY		1	1	1	1	1	1	Including washers and screws

MLZ-KA25VA MLZ-KA35VA MLZ-KA50VA

1-3. INDOOR UNIT ELECTRICAL PARTS AND FUNCTIONAL PARTS



Part numbers that are circled are not shown in the illustration.

No.	ROHS	Part No.	Part name	Symbol in Wiring Diagram	Q'ty/unit						Remarks
					MLZ-KA						
					25VA -		35VA -		50VA -		
E1	E2	E1	E2	E1	E2						
1	G	M21 L9V 781	LAMP COVER		1	1	1	1	1	1	
2	G	M21 L9V 326	DISPLAY RECEIVER P.C. BOARD		1	1	1	1	1	1	
3	G	T2W 0A2 376	TERMINAL BLOCK		1	1	1	1	1	1	
4	G	M21 L9V 024	MOTOR BAND		1	1	1	1	1	1	
5	G	M21 1A0 505	FAN MOTOR RUBBER MOUNT		1	1	1	1	1	1	
6	G	M21 1V0 300	INDOOR FAN MOTOR	MF	1	1	1	1	1	1	RC0J30-□□
7	G	M21 L9V 302	LINE FLOW FAN		1	1	1	1	1	1	
8	G	M21 L9V 504	SLEEVE BEARING		1	1	1	1	1	1	
9	G	M21 L9V 509	BEARING MOUNT		1	1	1	1	1	1	
10	G	M21 L9V 307	INDOOR COIL THERMISTOR	RT12,13	1	1	1	1			
	G	M21 L2W 307	INDOOR COIL THERMISTOR	RT12,13,14					1	1	
	G	M21 L1W 307	INDOOR COIL THERMISTOR	RT15					1	1	
11	G	M21 L9V 312	FLOAT SENSOR	FS	1	1	1	1	1	1	
12	G	T2W 0A8 303	DRAIN PUMP	DP	1	1	1	1	1	1	
13	G	M21 L9V 260	DRAIN PUMP CUSHION SET		1	1	1	1	1	1	CUSHION x 2 BASE,COVER SET
14	G	M21 L9V 783	SENSOR HOLDER		1	1	1	1	1	1	COVER,HOLDER SET
15	G	M21 L9V 308	ROOM TEMPERATURE THERMISTOR	RT11	1	1	1	1	1	1	
16	G	T2W 0A8 450	ELECTRONIC CONTROL P.C. BOARD		1						
	G	T2W 0A9 450	ELECTRONIC CONTROL P.C. BOARD				1				
	G	T2W 1A0 450	ELECTRONIC CONTROL P.C. BOARD						1		
	G	T2W 1V0 450	ELECTRONIC CONTROL P.C. BOARD			1					
	G	T2W 1V1 450	ELECTRONIC CONTROL P.C. BOARD					1			
	G	T2W 1V2 450	ELECTRONIC CONTROL P.C. BOARD							1	
17	G	M21 L9V 784	ELECTRONIC CONTROL P.C. BOARD BOX		1	1	1	1	1	1	
18	G	T2W L3V 382	FUSE	F11	1	1	1	1	1	1	T3.15AL250V
19	G	T2W L3V 384	VARISTOR	NR11	1	1	1	1	1	1	
20	G	M21 L9V 708	PIPE FIXING BAND		1	1	1	1			
	G	M21 L3W 708	PIPE FIXING BAND						1	1	

2

OPTIONAL PARTS

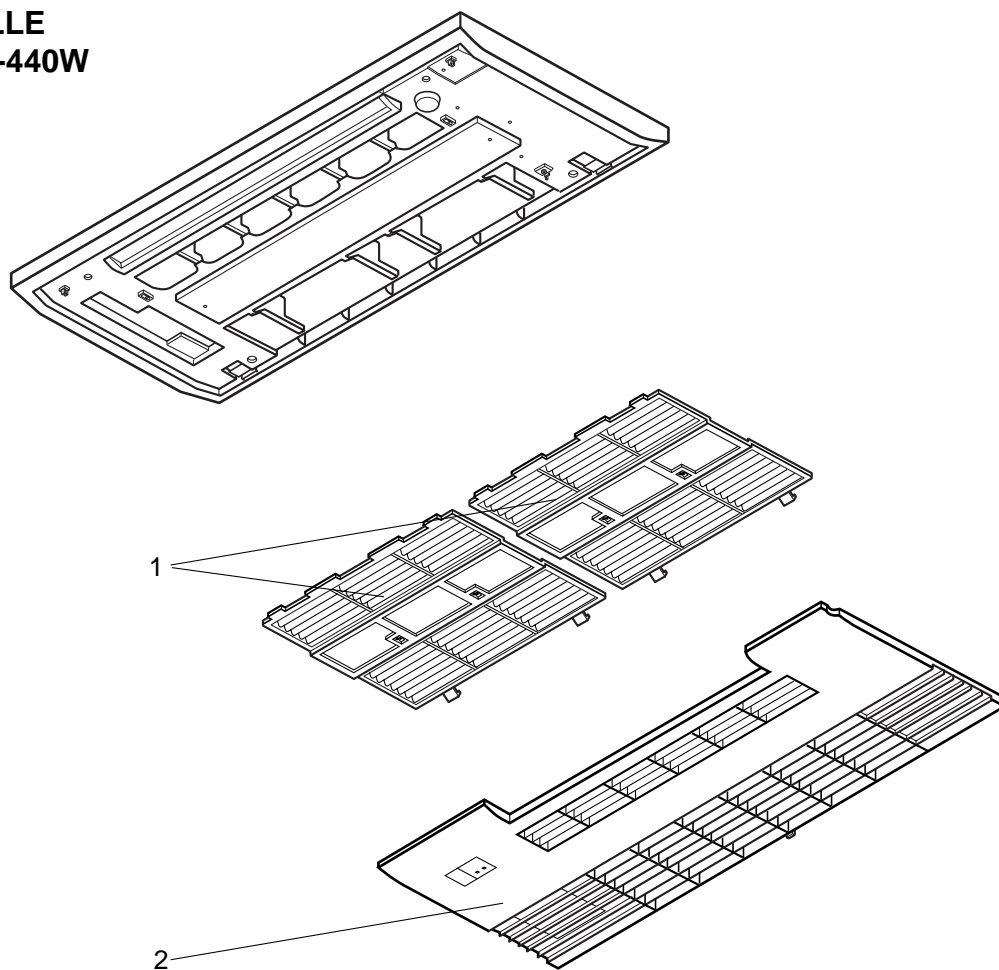
MLZ-KA25VA

MLZ-KA35VA

MLZ-KA50VA

2-1. GRILLE

MLP-440W



Part numbers that are circled are not shown in the illustration.

No.	RoHS	Part No.	Part name	Symbol in Wiring Diagram	Q'ty/unit						Remarks
					MLZ-KA						
					25VA -		35VA -		50VA -		
					E1	E2	E1	E2	E1	E2	
1	G	M21 0A8 100	AIR FILTER		2	2	2	2	2	2	
2	G	T2W 0A8 010	INTAKE GRILLE ASSEMBLY		1	1	1	1	1	1	
③	G	M21 0A8 067	SCREW CAP		1	1	1	1	1	1	
④	G	M21 0A8 049	GRILLE SHAFT		2	2	2	2	2	2	
⑤	G	M21 0A8 250	SCREW BAG ASSEMBLY		1	1	1	1	1	1	

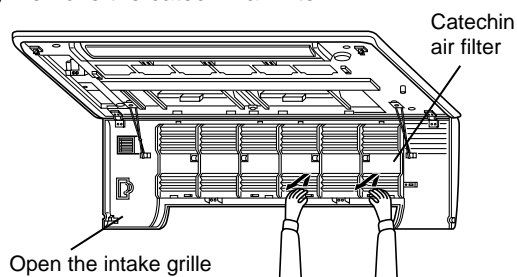
2-2. CATECHIN AIR FILTER

- Catechin is a bioflavonoid that is found in green tea that has both antiviral and antioxidant qualities. In addition to these benefits, Catechin also offers excellent deodorizing characteristics. Catechin air filter uses this compound to not only improve air quality but also prevent the spread of bacteria and viruses in the room.
- Clean the AIR FILTER about once every 2weeks. Cleaning procedure is the same as AIR FILTER (ANTI-MOLD). Refer to the operating instructions book.
- Clogged AIR FILTER may reduce the air conditioner capacity and cause dew drop or frost on the indoor unit.

Model	Part No.
MLZ-KA25VA- E1 , E2	MAC-3004CF-E
MLZ-KA35VA- E1 , E2	
MLZ-KA50VA- E1 , E2	

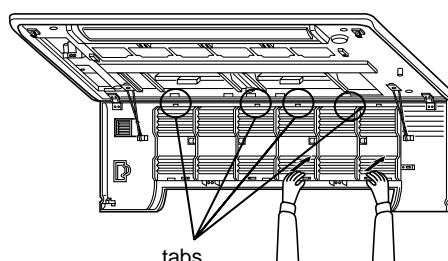
Replacement of the catechin air filter

(1) Remove the catechin air filter.



(2) Install a new catechin air filter.

Be sure to install the tabs into the intake grille hole.



(3) Securely close the intake grille.

2-3. AIR CLEANING FILTER (ANTI-ALLERGY ENZYME FILTER)

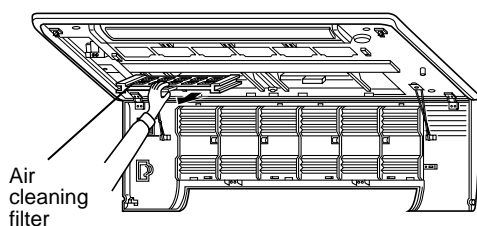
- AIR CLEANING FILTER removes fine dust of 0.01 micron from air by means of static electricity.
- Normal life of AIR CLEANING FILTER is 1 year.
If AIR CLEANING FILTER is to be washed, soak AIR CLEANING FILTER in water (when showing dirt, in lukewarm water) and rinse it delicately, without removing the filter from the frame about once every 3 months.
- Clogged AIR CLEANING FILTER may reduce the air conditioner capacity or cause frost on the air outlet.
- Do not remove or attach AIR CLEANING FILTER during unit operation.

Model	Part No.
MLZ-KA25VA- E1 , E2	MAC-171FT-E
MLZ-KA35VA- E1 , E2	
MLZ-KA50VA- E1 , E2	



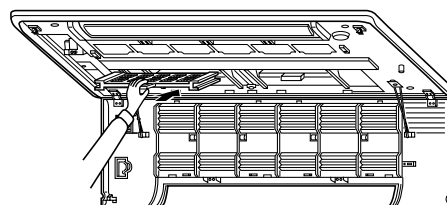
Replacement of the air cleaning filter

(1) Remove the air cleaning filter.



(2) Attach a new air cleaning filter.

Fix the filter with the tabs securely.



(3) Securely close the intake grille.



© Copyright 2007 MITSUBISHI ELECTRIC ENGINEERING CO.,LTD
Distributed in Nov. 2009. No. OBB483 REVISED EDITION-A 7
Distributed in Feb. 2007. No. OBB483 8
Made in Japan

New publication, effective Nov. 2009
Specifications subject to change without notice.